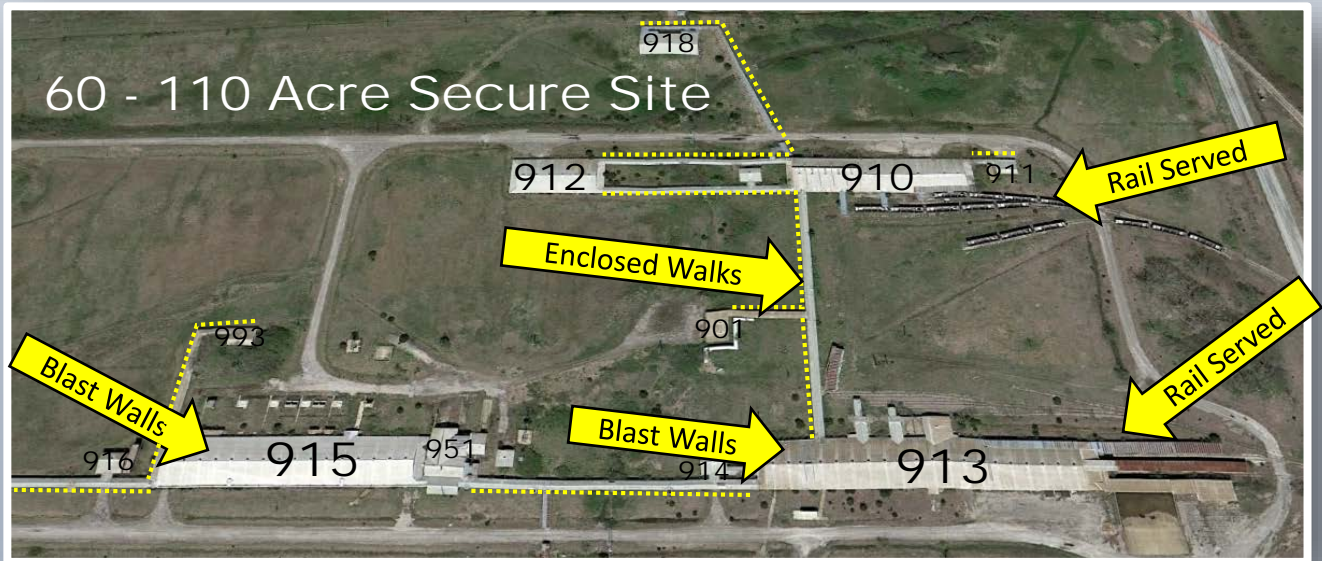
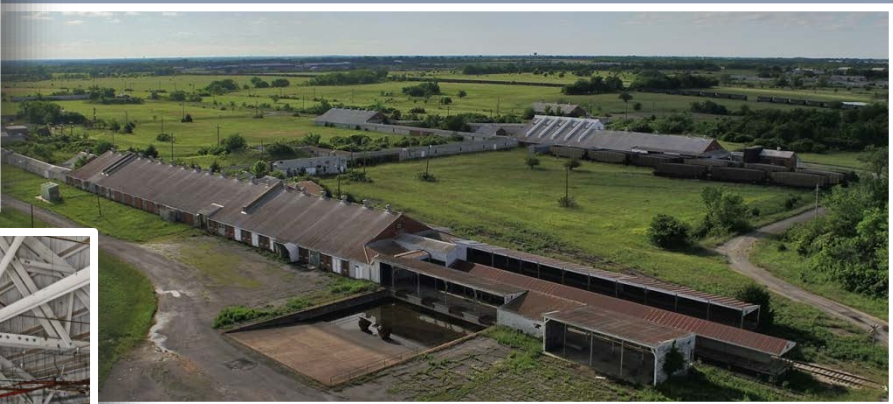


FEATURED PROPERTY



Energetics-ready site

Several outstanding buildings with a combined floor space of more than 110,000 sf are available immediately. Excellent for energetics manufacturing operations, these buildings are filled with blast walls and open bays, and are located within a secured perimeter inside of a gated industrial park. Heavy floors of 18" concrete and rail make this area ideal for many industrial operations. Built in 1941, the buildings have excellent natural light, with infrastructure to meet any need. The buildings are available as a package or individually. ATF-certifiable storage is available on-site.



Short or long-term leases are available on a variety of other structures.

www.greatplainsindustrialpark.com

(620) 421-1228

