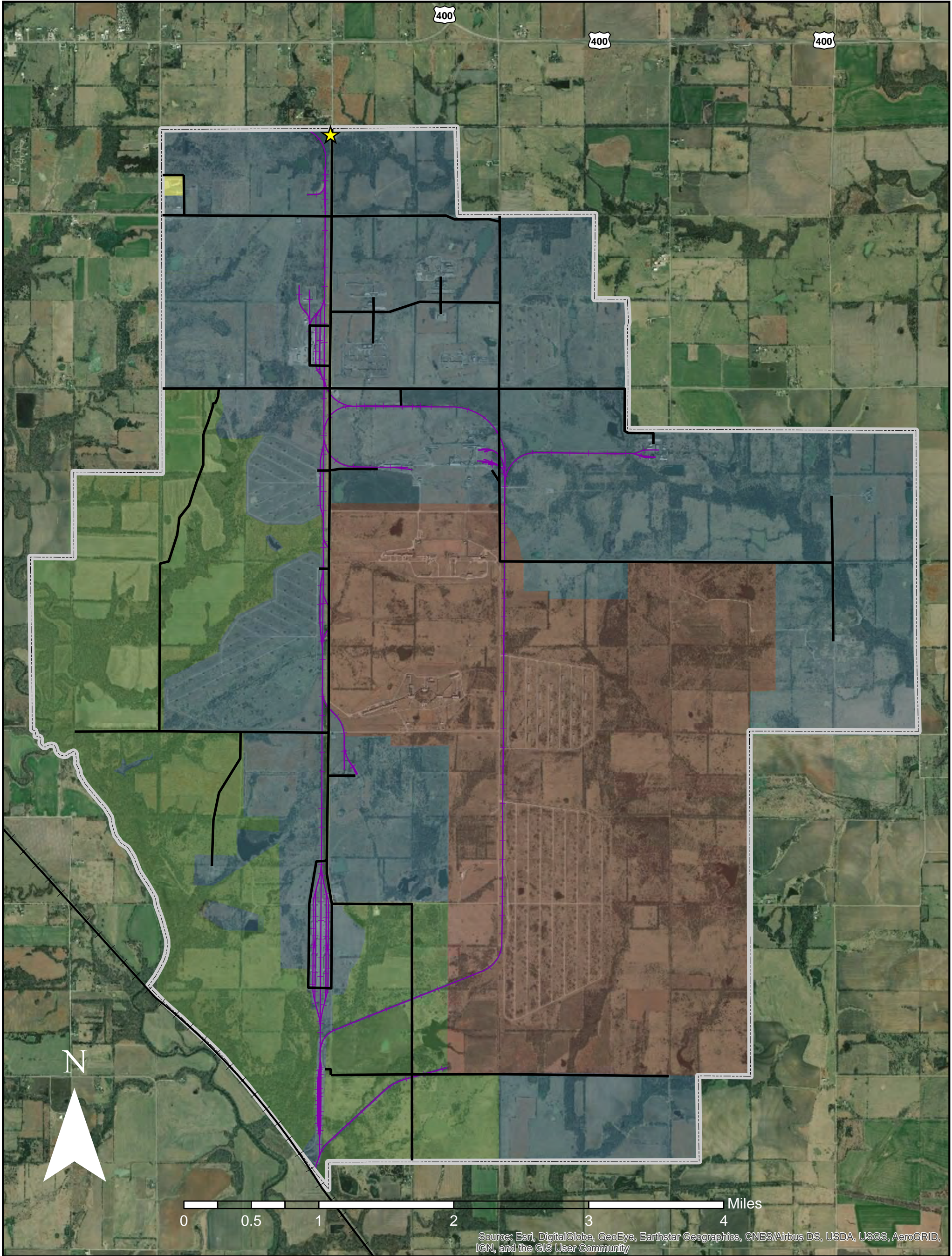


Great Plains Industrial Park - Roads and Rail



Source: Esri, DigitalGlobe, GeoEye, Earthstar Geographics, CNES/Airbus DS, USDA, USGS, AeroGRID, IGN, and the GIS User Community



Great Plains Development Authority
 21101 Scott Road
 Parsons, KS 67357
 (620) 421-1228
 bdantic@parsonsk.com
 www.greatplainsindustrialpark.com

Legend	
	Entrance Gate
	Park Roads
	Park Rail
	Union Pacific
	Great Plains Development Authority (6,829 acres)
	Cornwall Specialty Trading (10 acres)
	Day & Zimmermann Kansas, LLC (4,012 acres)
	Kansas Department of Wildlife (3,000 acres)