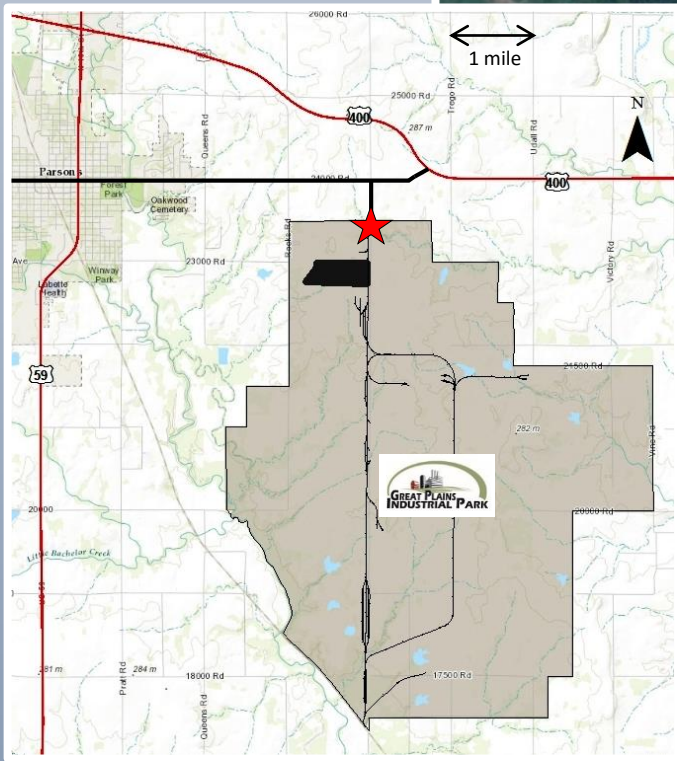
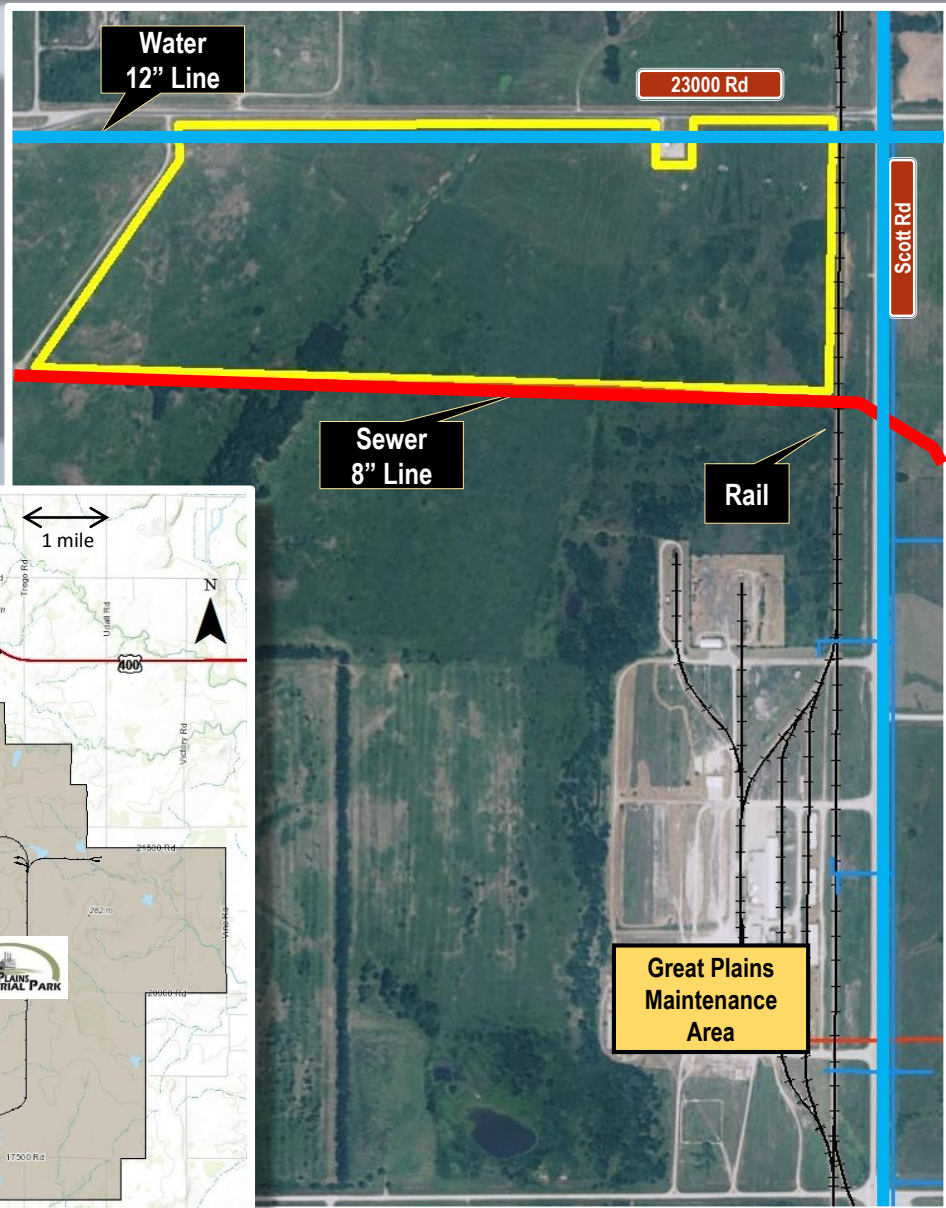
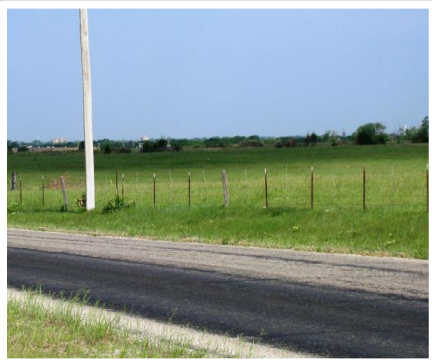


FEATURED PROPERTY



Prime Development Site

For sale or lease, this prime development site is complete with onsite road, rail, electric, water and wastewater. Approximately 100 acres at the northern end of this 14,000 acre gated industrial park in the heart of Southeast Kansas.

The 1,200' of rail frontage is part of an extensive system in place at the industrial park that includes more than 30 miles of total rail and an in-place and operational switch off of Union Pacific's mainline.

Additional acreage is available to the south to accommodate alternate formatting.

Contact CEO Daniel Mann at 620-778-3375 or dmann@parsonsk.com for additional information on this site or a variety of other available sites.

www.greatplainsindustrialpark.com

