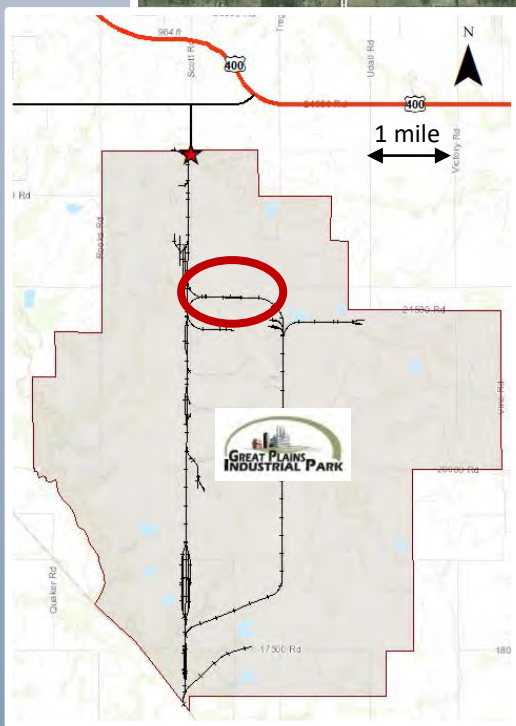
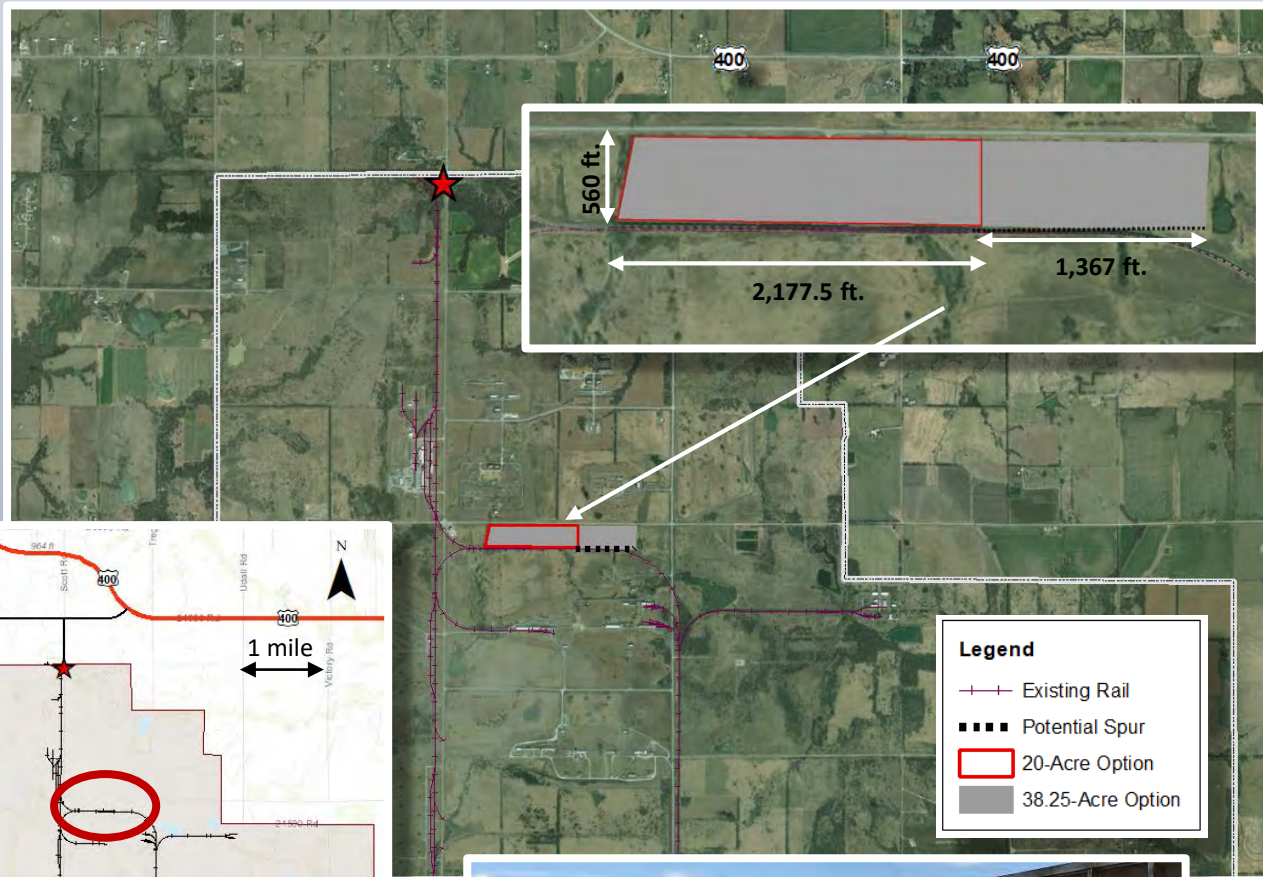


FEATURED PROPERTY



Premium Rail Site

This premium rail-served site includes an approximately 2,177 ft. rail spur, with the potential to extend the spur an additional 1,300 feet if needed. A 200'x15' concrete dock rounds out this 20-40 acre site.

The rail is part of an extensive system in place at Great Plains Industrial Park that includes a looped system with 27 miles of total rail and other rail-served land opportunities, with a switch in place off Union Pacific's mainline.

Contact CEO Daniel Mann at 620-778-3375 or dmann@parsonsk.com for additional information on this site or a variety of other available sites.

www.greatplainsindustrialpark.com

